

Brailsford Road, Brailsford, SW2

£550,000

2 bedroom flat for sale

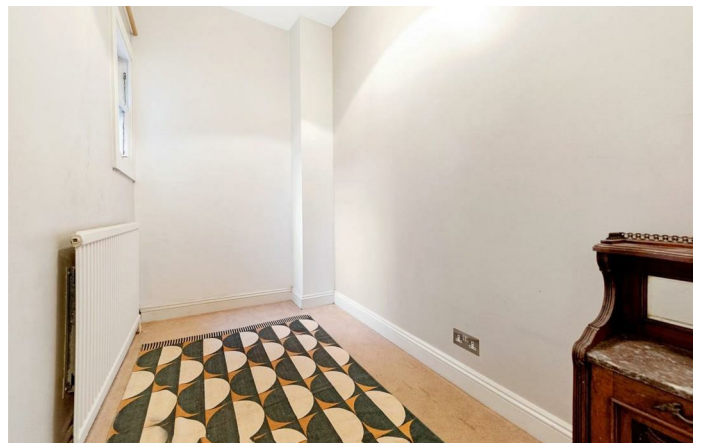
Property Details

A characterful, two double bedroom garden flat located on an extremely popular road, running parallel to Brockwell Park. The property occupies the ground floor of a Victorian townhouse and comprises a spacious reception room, a contemporary kitchen, two double bedrooms, a modern bathroom with utility area and a peaceful decked garden. Brailsford Road is a short walk to the centre of Brixton, with a large supermarket and various cafes, pubs and restaurants, all right on your doorstep. The amenities in Herne Hill are also a pleasant ten-minute stroll through Brockwell Park. Chain-free.

Features

- Private garden
- Cellar
- Chain free
- Victorian
- Characterful features
- Bright and airy throughout

Council tax band EPC rating (null)



Brailsford Road, Brailsford, SW2



2 Bed flat

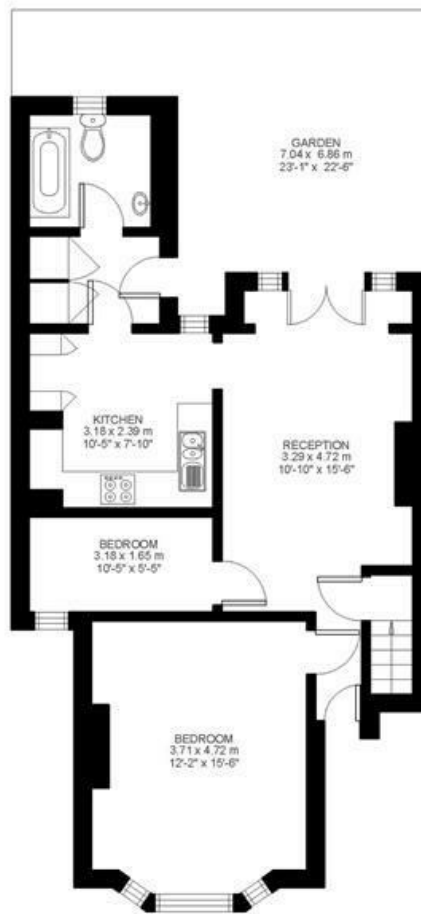
Approx internal area:

708 sqft 66 sqm

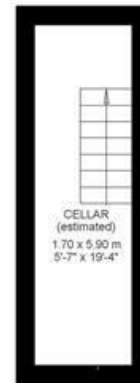
EXCLUDES CELLAR (estimated)
TOTAL INCLUSIVE AREA: 795 sqft / 74 sqm

While we do try our very best, floor plans are produced as a guide only and we take no responsibility for the precise accuracy with which any property is represented

Brailsford Road



Ground Floor



Cellar



Brailsford Road, Brailsford, SW2

